

Kelani WiFi Connection Guide

From the Desktop mode in Windows 7

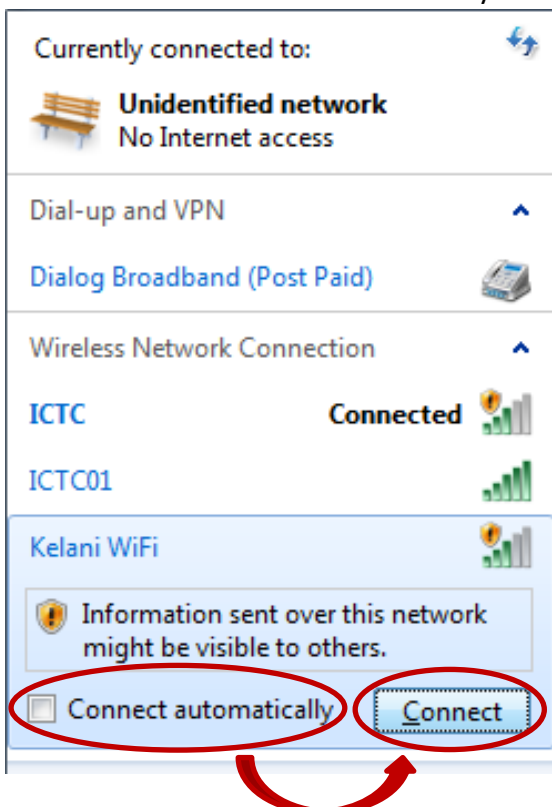
1. Click on the wireless connection icon from the Taskbar.



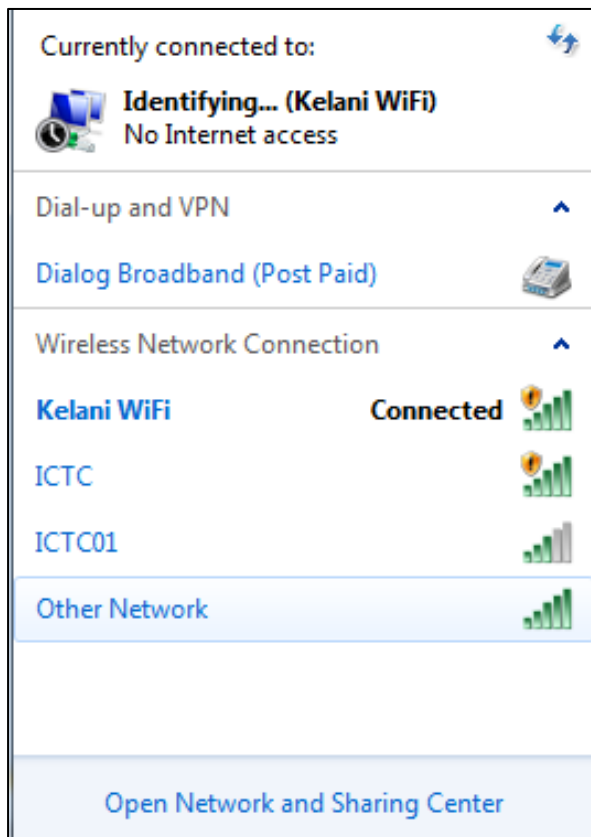
2. List of available network connections will appear. Select Kelani WiFi.



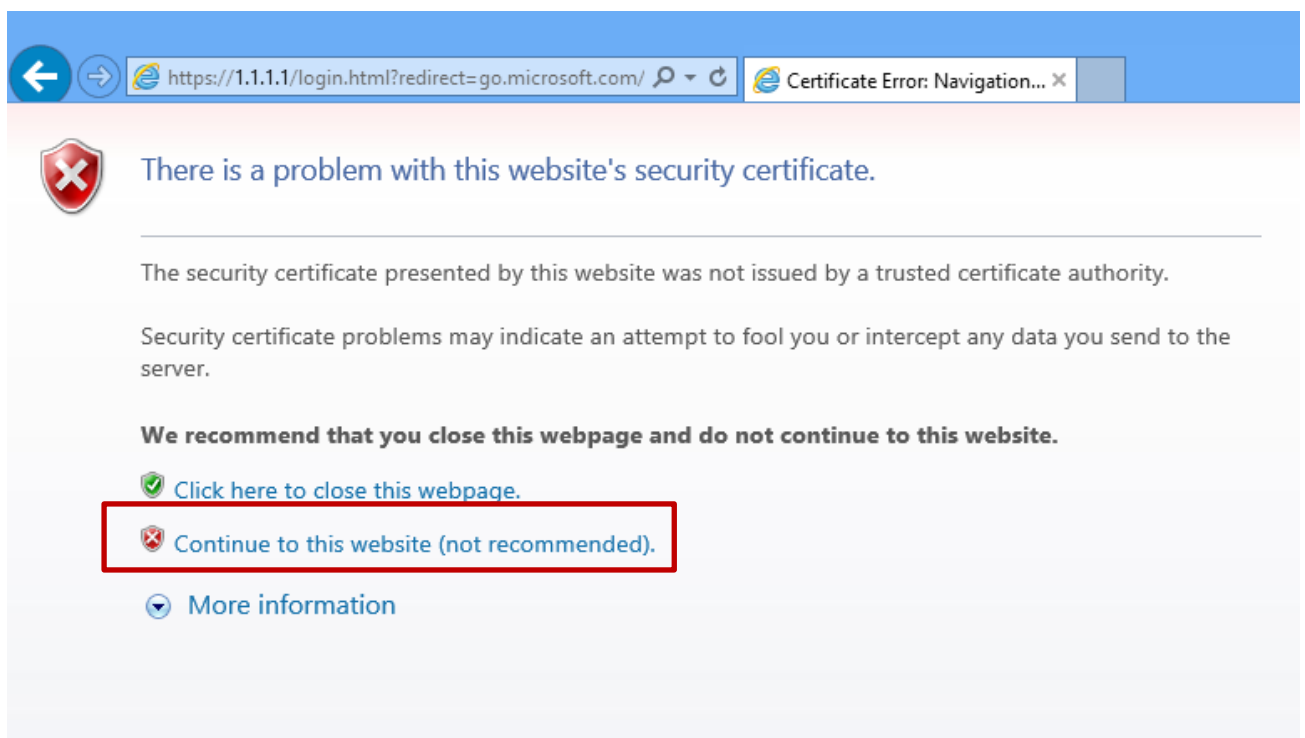
3. Check the box 'Connect automatically' and click on Connect.



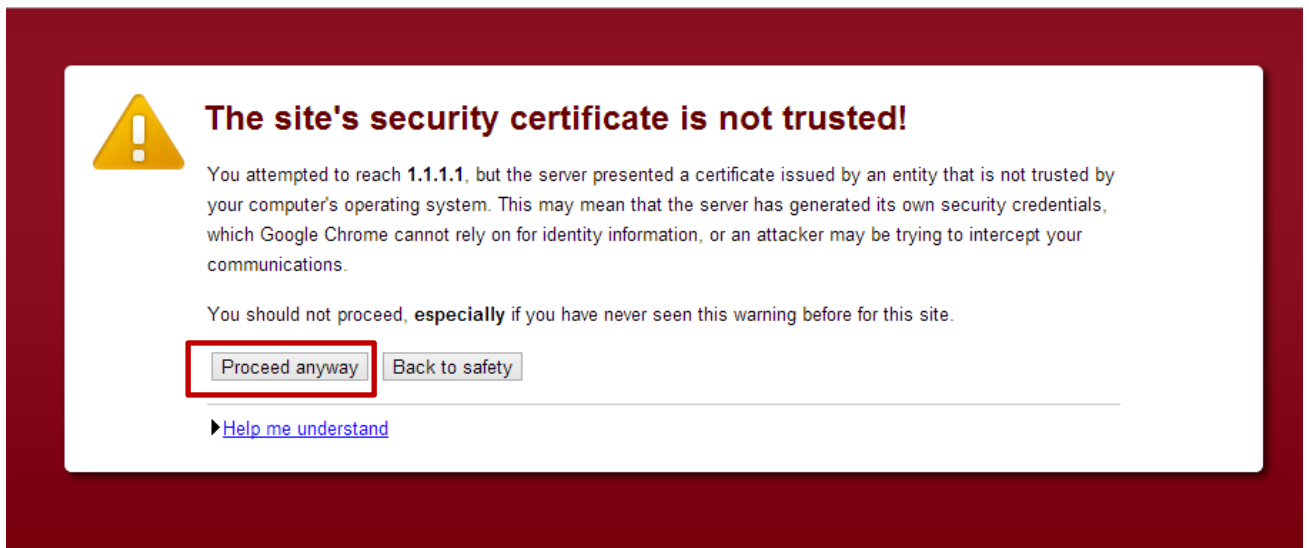
4. You're now connected to Kelani WiFi.



5. Open the web browser you use. You may have to accept the security certificate with a warning (Please ignore the warning).
- a. Internet Explorer: Click on "Continue to this website (not recommended)."

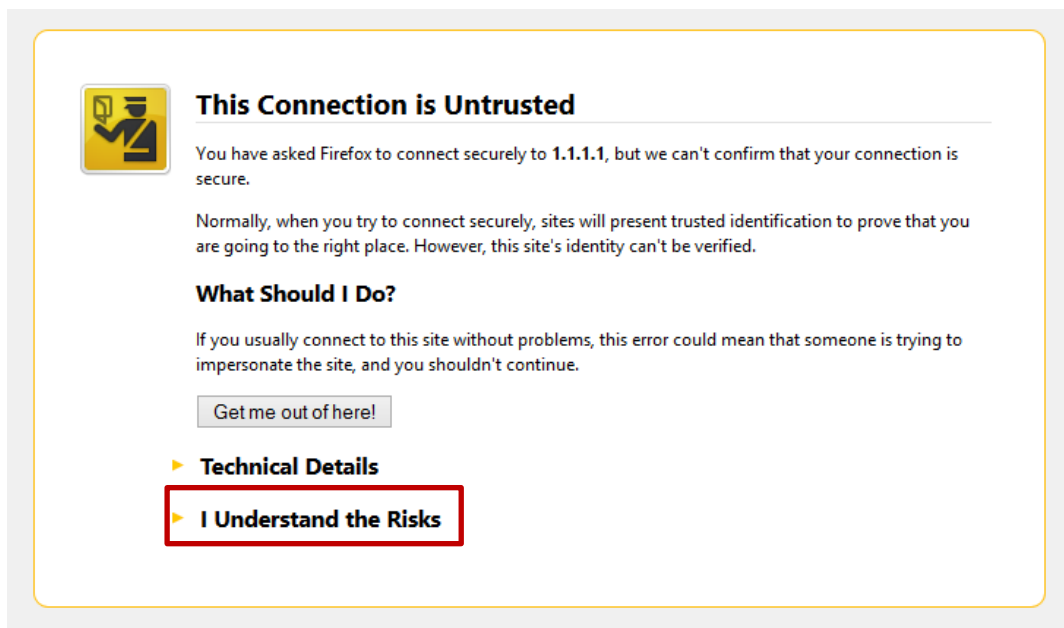


- b. Google Chrome: Click on “Proceed anyway” button.

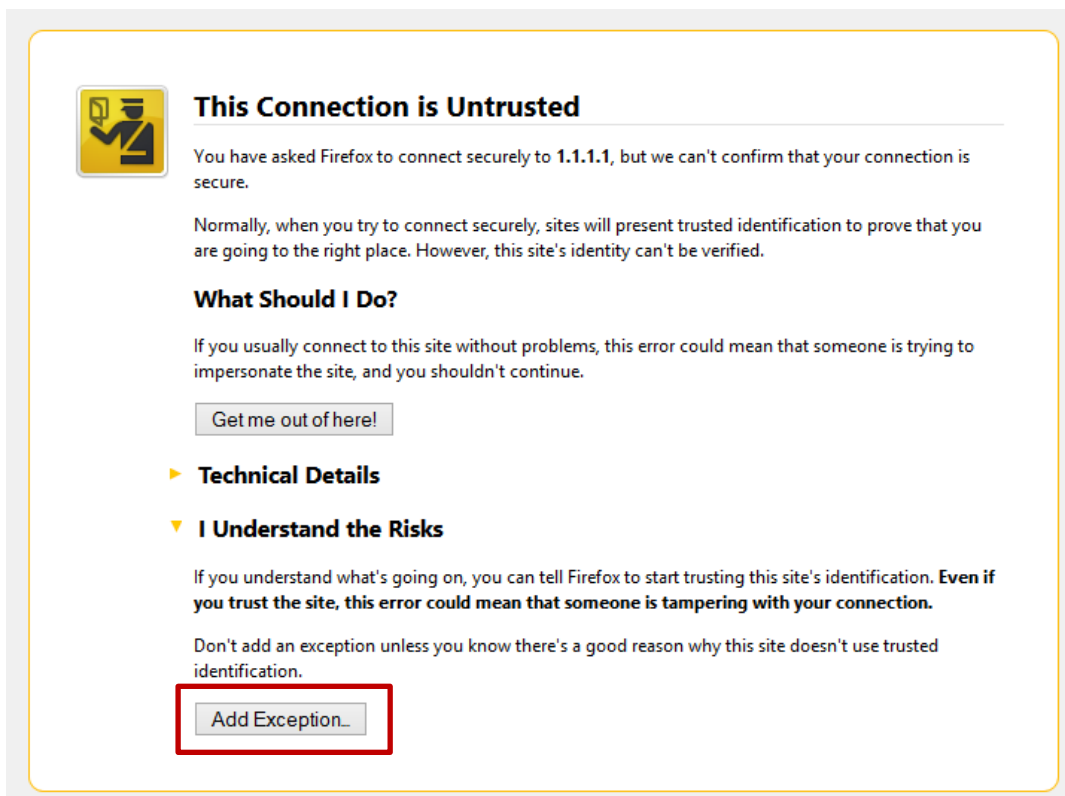


- c. Mozilla Firefox:

- Click on the “I Understand the Risks”.



- Then click on the “Add Exception” button.



This Connection is Untrusted

You have asked Firefox to connect securely to **1.1.1.1**, but we can't confirm that your connection is secure.

Normally, when you try to connect securely, sites will present trusted identification to prove that you are going to the right place. However, this site's identity can't be verified.

What Should I Do?

If you usually connect to this site without problems, this error could mean that someone is trying to impersonate the site, and you shouldn't continue.

[Get me out of here!](#)

► **Technical Details**

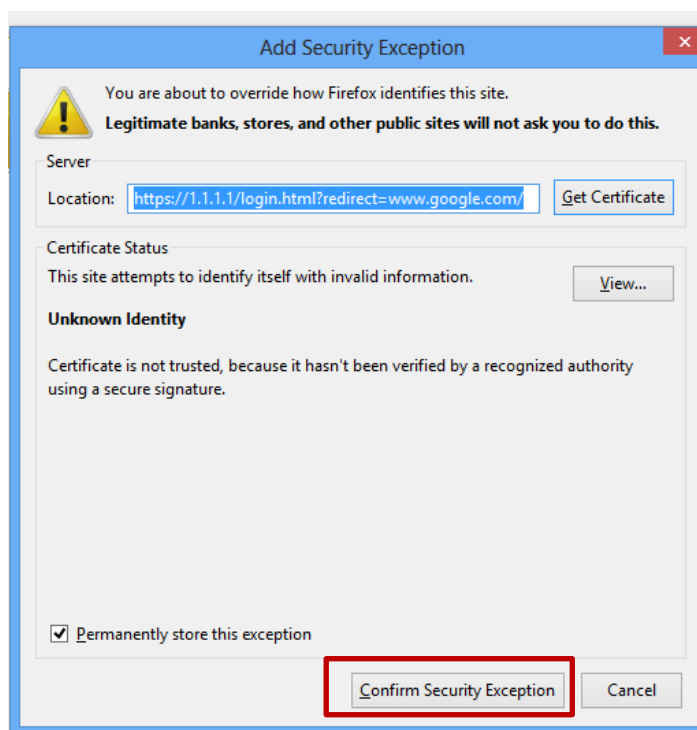
▼ **I Understand the Risks**

If you understand what's going on, you can tell Firefox to start trusting this site's identification. **Even if you trust the site, this error could mean that someone is tampering with your connection.**

Don't add an exception unless you know there's a good reason why this site doesn't use trusted identification.

[Add Exception...](#)

- Now click on the “Confirm Security Exception” button.



Add Security Exception

! You are about to override how Firefox identifies this site.
Legitimate banks, stores, and other public sites will not ask you to do this.

Server

Location: [Get Certificate](#)

Certificate Status

This site attempts to identify itself with invalid information. [View...](#)

Unknown Identity

Certificate is not trusted, because it hasn't been verified by a recognized authority using a secure signature.

Permanently store this exception

[Confirm Security Exception](#) [Cancel](#)

6. The following login window will appear. Provide your Kelani Net ID and Password. Then click on submit.

Login

Kelani WiFi

Use your **Kelani Net ID** and relevant password to log in.
Please contact The IT HelpDesk for assistance.

User Name

Password