

# Kelani WiFi Connection Guide

---

*From the Desktop mode in Windows 8*

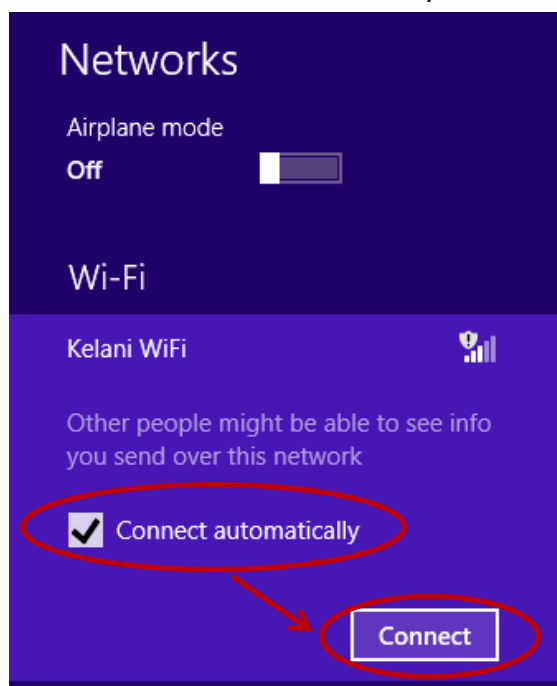
- 1) Click on the wireless connection icon from the Taskbar.



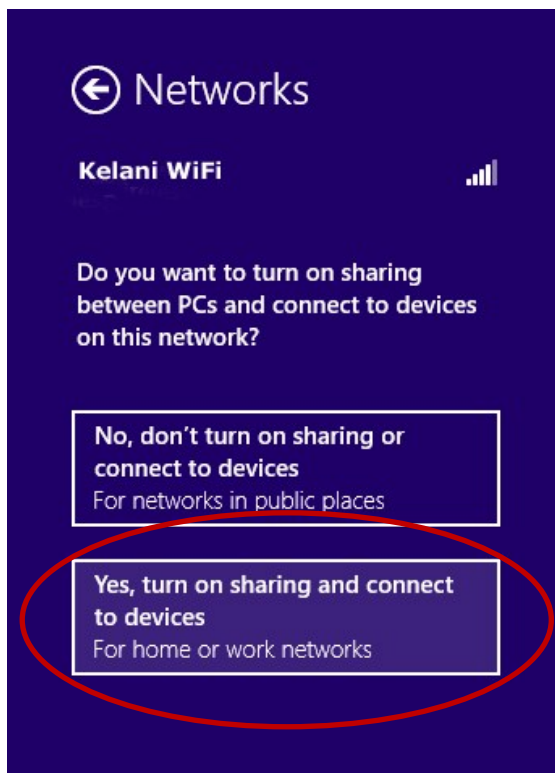
- 2) List of available network connections will appear. Select Kelani WiFi.



- 3) Check the box 'Connect automatically' and click on Connect.



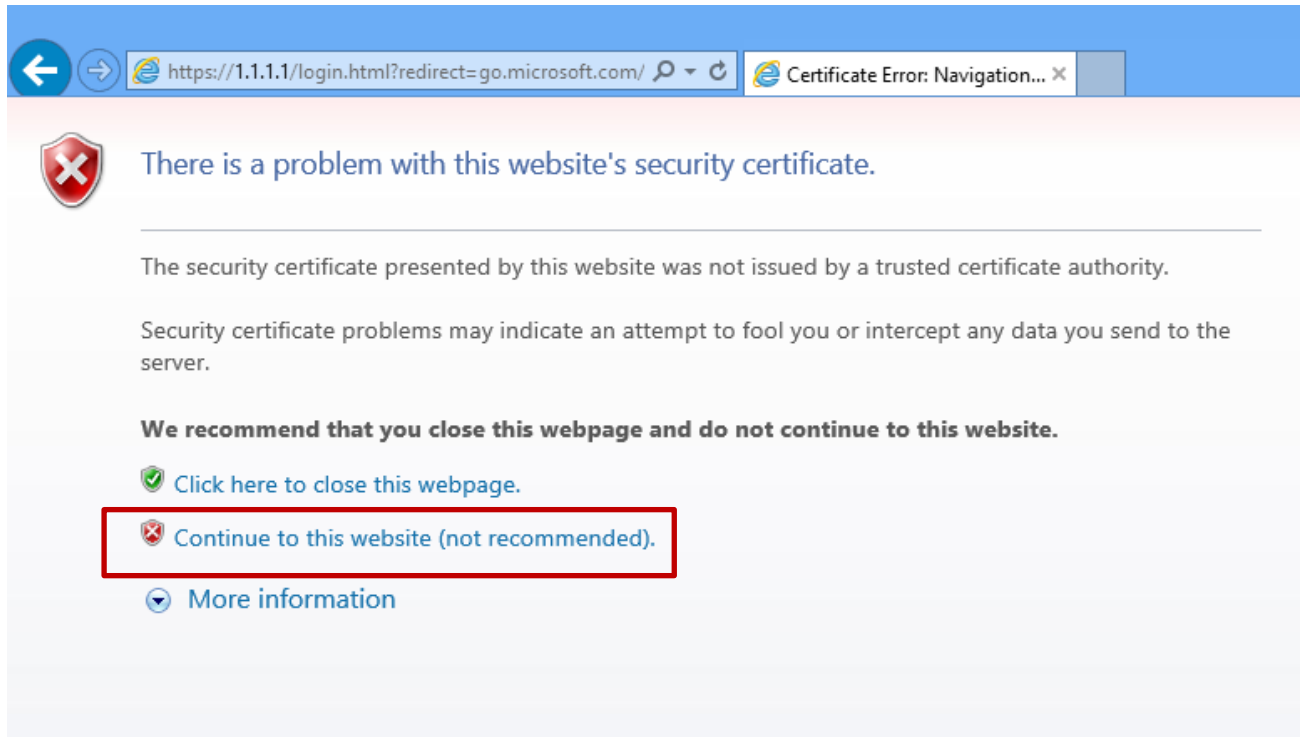
4) Next you'll be asked about setting up sharing. Choose the second option.



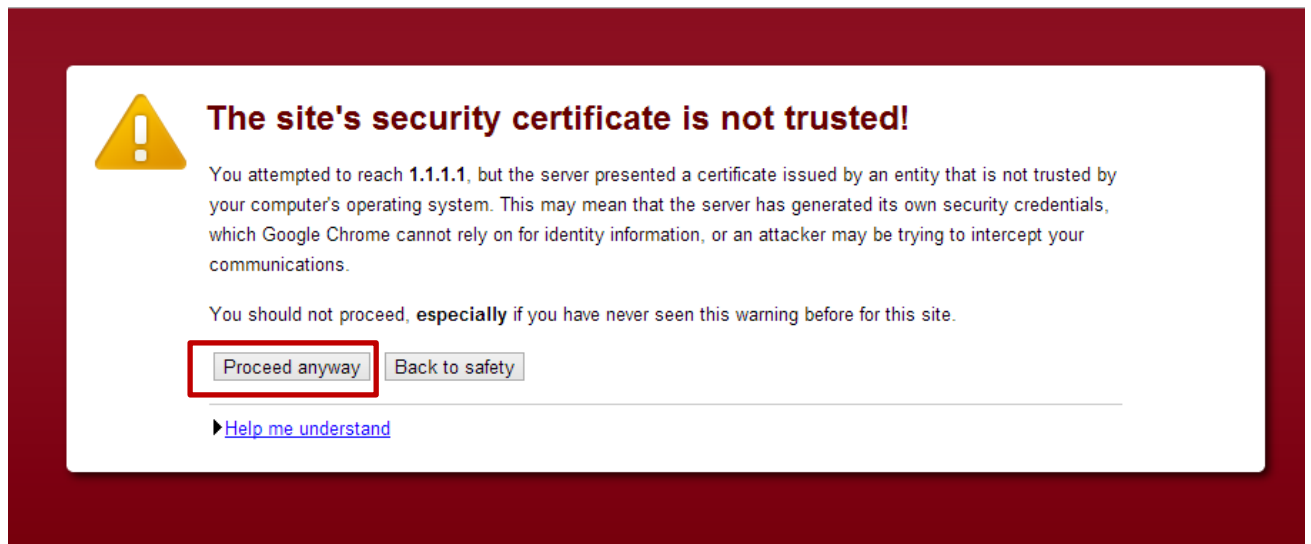
5) You're now connected to Kelani WiFi.



- 6) Open the web browser you use. You may have to accept the security certificate with a warning (Please ignore the warning).
- a) Internet Explorer: Click on “Continue to this website (not recommended).”

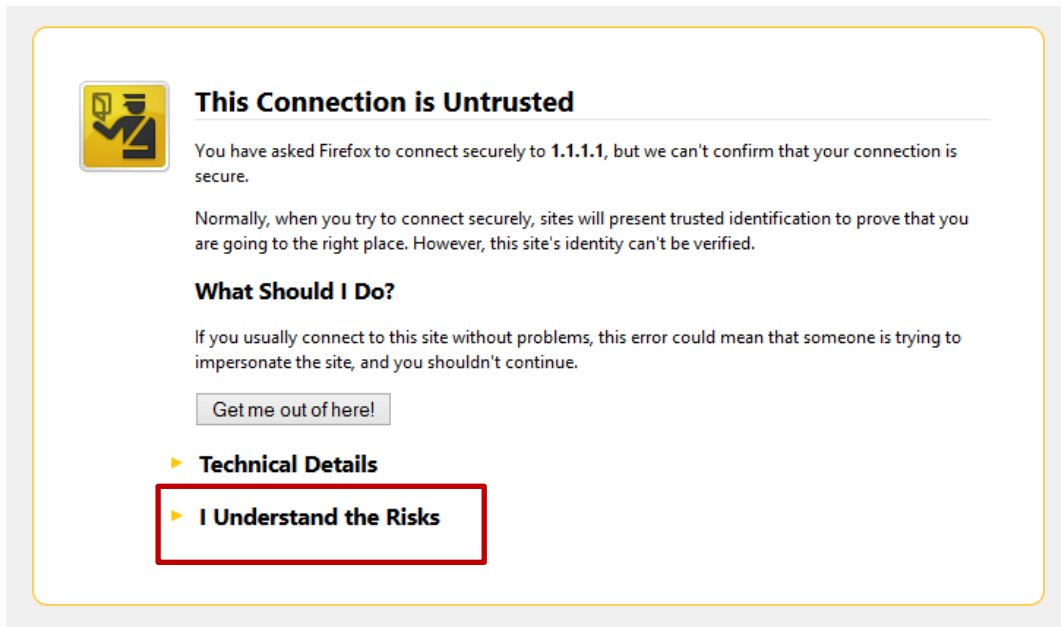



- b) Google Chrome: Click on “Proceed anyway”



c) Mozilla Firefox:

- Click on the “I Understand the Risks”.



 **This Connection is Untrusted**

You have asked Firefox to connect securely to **1.1.1.1**, but we can't confirm that your connection is secure.

Normally, when you try to connect securely, sites will present trusted identification to prove that you are going to the right place. However, this site's identity can't be verified.

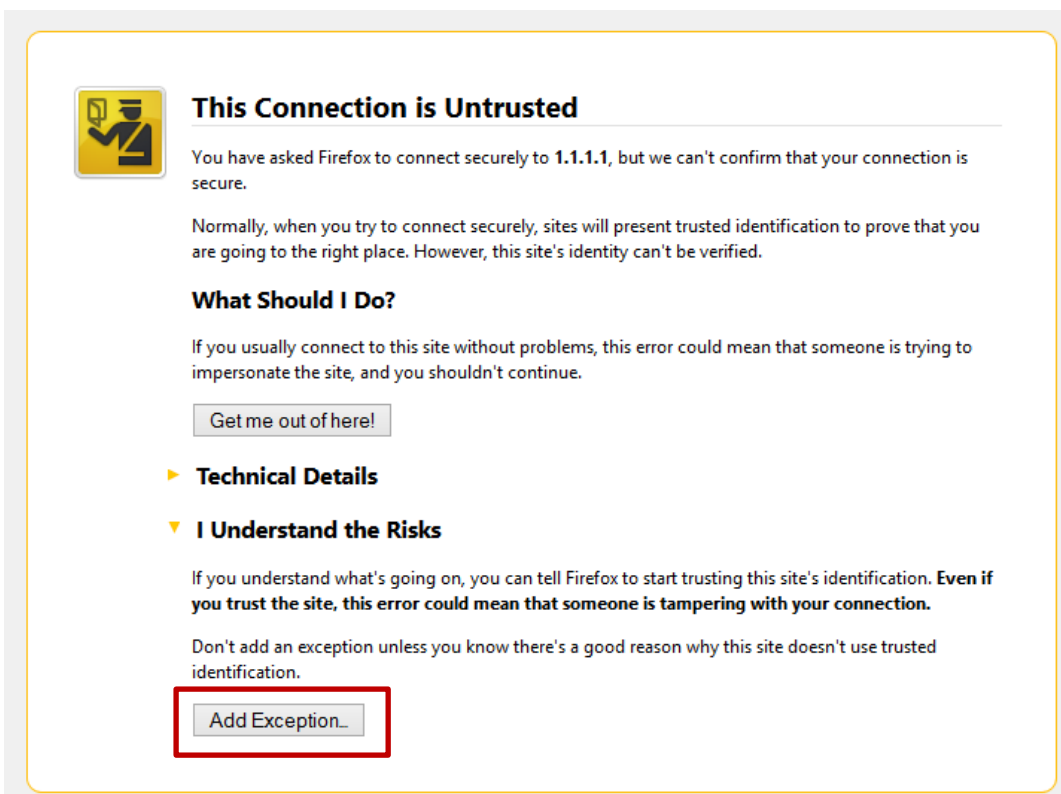
**What Should I Do?**


If you usually connect to this site without problems, this error could mean that someone is trying to impersonate the site, and you shouldn't continue.

► **Technical Details**

► **I Understand the Risks**

- Then click on the “Add Exception” button.



 **This Connection is Untrusted**

You have asked Firefox to connect securely to **1.1.1.1**, but we can't confirm that your connection is secure.

Normally, when you try to connect securely, sites will present trusted identification to prove that you are going to the right place. However, this site's identity can't be verified.

**What Should I Do?**

If you usually connect to this site without problems, this error could mean that someone is trying to impersonate the site, and you shouldn't continue.

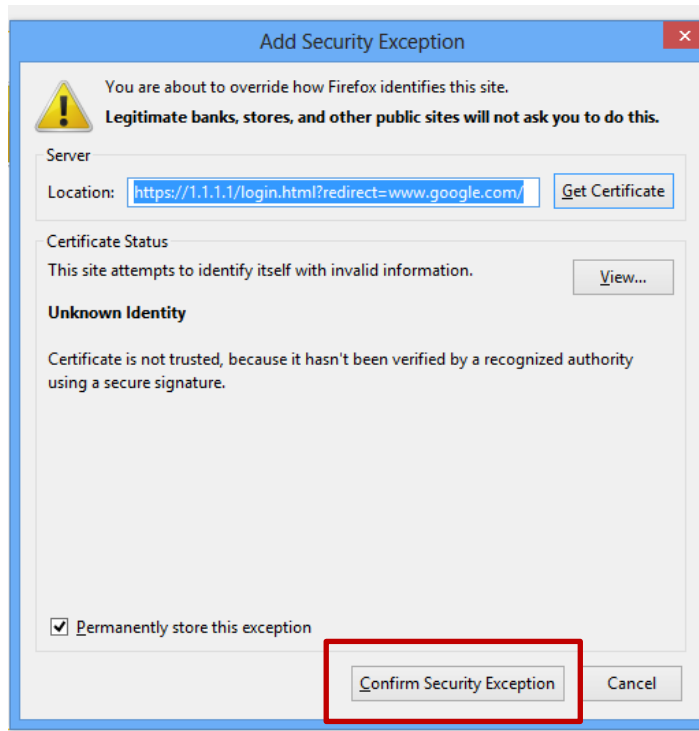
► **Technical Details**

▼ **I Understand the Risks**

If you understand what's going on, you can tell Firefox to start trusting this site's identification. **Even if you trust the site, this error could mean that someone is tampering with your connection.**

Don't add an exception unless you know there's a good reason why this site doesn't use trusted identification.

- Now click on the “Confirm Security Exception” button.



- 7) The following login window will appear. Provide your Kelani Net ID and Password. Then click on submit.

## Login

### Kelani WiFi

Use your **Kelani Net ID** and relevant password to log in.  
Please contact The IT HelpDesk for assistance.

---

**User Name**

**Password**